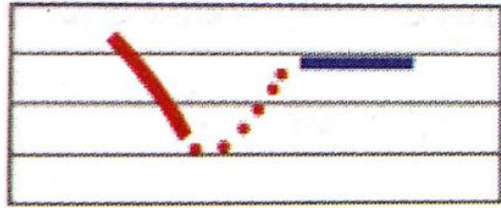
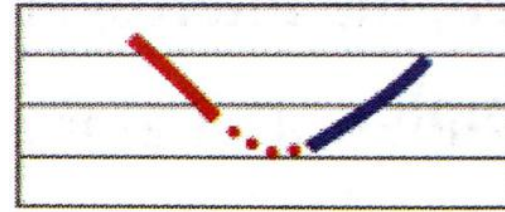


Rules of Pinyin (拼音规则)

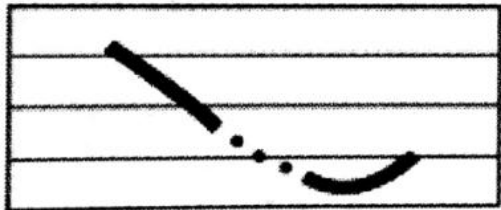
1. Tone Collocation in Disyllabic Words : 4th tone + 1st/2nd/3rd/4th tone



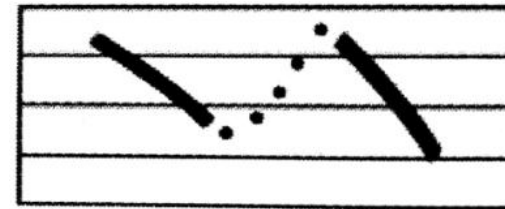
miànbāo
面包



miàntiáo
面条



diànnǎo
电脑



diànhuà
电话

Practice (练习)

xiàtiān diàndēng
chànggē jiànkāng

qùnián diànchí
fùxí dìtú

tiàowǔ diànyǐng
hànyǔ dìtiě

shuǐjiào diànshì
hànzì jiànmiàn

Characters (汉字)

Chinese Radicals:

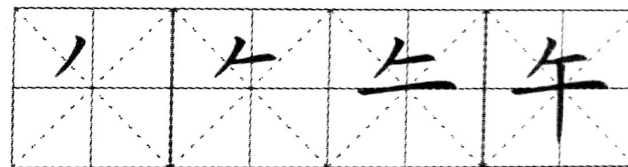
- “阝” (called 耳刀旁 ^{ěr dāo páng})
- “亻” (called 单人旁 ^{dān rén páng})

偏旁 Radical	解释 Explanation	例字 Example Characters
阝	the radical “阝” is related to a landform or location	院 yuàn courtyard 阳 yáng sun
亻	the radical “亻” is related to a person	你 nǐ (singular) you 他 tā he, him

Single-Component Characters (独体字)

→ → →
午

wǔ



time between
11am to 1pm

→ → →
电

diàn



multi-edged
flash