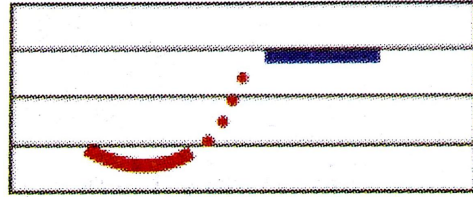
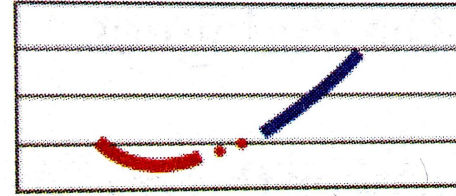


# Rules of Pinyin (拼音规则)

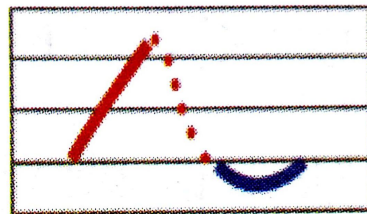
## 1. Tone Collocation in Disyllabic Words : 3<sup>rd</sup> tone + 1<sup>st</sup>/2<sup>nd</sup>/3<sup>rd</sup>/4<sup>th</sup> tone



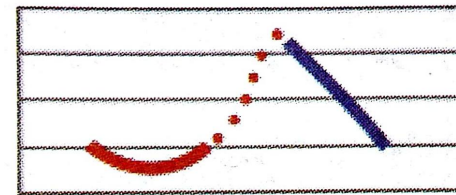
shǒujī  
手机



shǒuzhuó  
手镯



shǒubiǎo  
手表



shǒutào  
手套

# Practice (练习)

lǎoshī měitiān  
hǎibiān yījīng

lǎorén měinián  
hǎimián yǐqián

yǔsǎn měihǎo  
xǐzǎo biǎoyǎn

yǒuyòng měilì  
gǎnxiè biǎoxiàn

# Characters (汉字)

## Chinese Radicals:

- “口” ( called 国字框 )  
guó zì kuàng
- “礻” ( called 示字旁 )  
shì zì páng

偏旁 Radical	解释 Explanation	例字 Example Characters
口	the radical “口” means being trapped or besieged	国 guó <b>country</b> 困 kùn <b>to be trapped</b>
礻	the radical “礻” is a variant of “示”, related to deity, sacrificial rites and one's fortune	视 shì <b>to look</b> 祝 zhù <b>to wish</b>

# Characters (汉字)

## Enclosure:

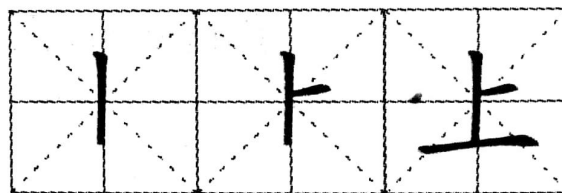
- compound structure
- the structure enclosed on all the four sides

结构 Structure	例字 Example Characters	图解 Illustrations
全包围结构 complete enclosure	四 sì four 国 guó country, nation	

# Single-Component Characters (独体字)

二 → 𠄎 → 𠄎 → 上

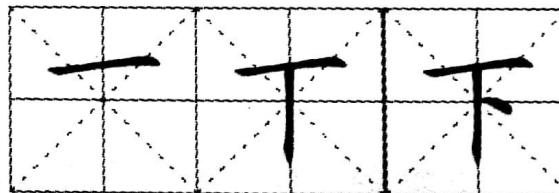
shàng



up,  
above

一 → 一 → 下 → 下

xià



down,  
below

一 → 一 → 本

běn



root of  
everything