



Chinlingo Chinese

Living in China

Is there any bus station nearby?

附近有公交车站吗?

✦ Instructions



- **Warm-up**
- **Words & Sentences**
- **Conversation**
- **Activities**

Warm-up



Which kind of transport do you prefer to choose?



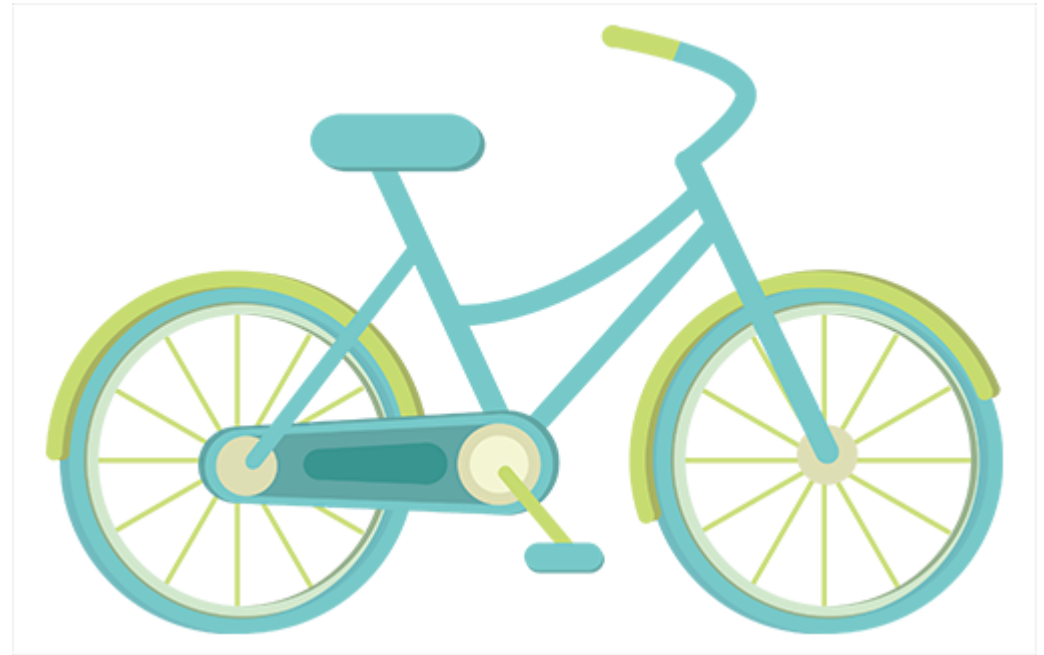
Words



zìxíngchē

自行车

bicycle



Words



chuán

船

boat; ship



Words



chūzūchē

出租车

taxi



Words



gōngjiāochē

公交车

bus



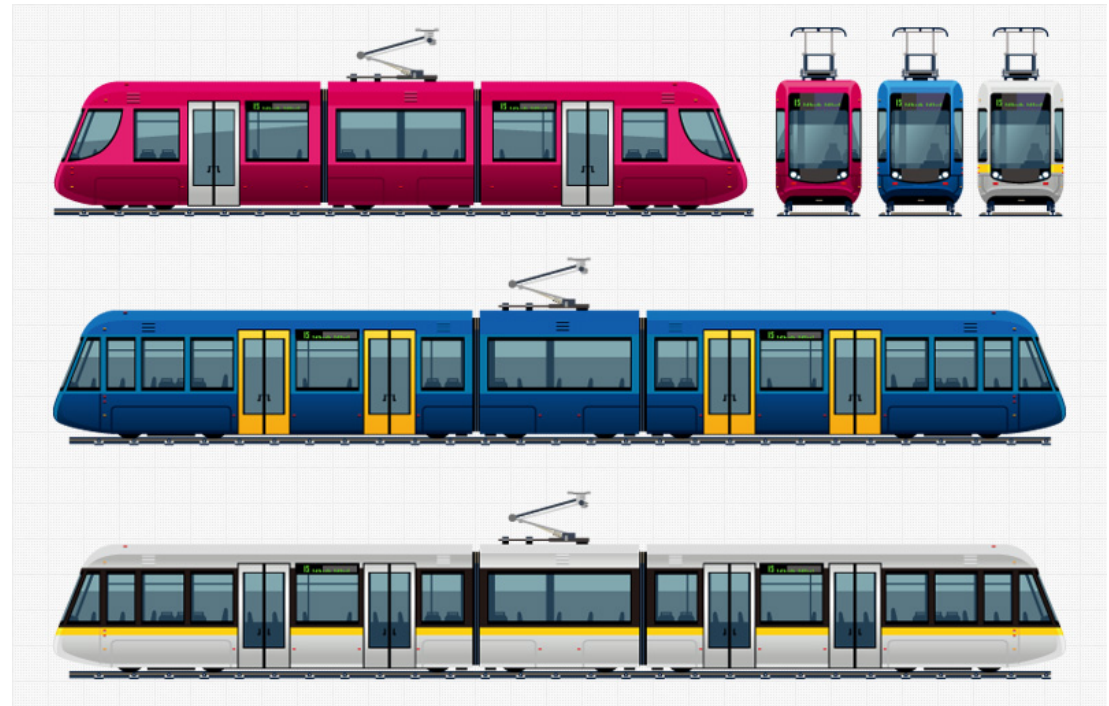
Words



dìtiě

地铁

subway



Words



fēiji

飞机

plane



Words

zuò

坐

v. take; travel by
(a vehicle)

zuò chuán

坐 船

zuò dìtiě

坐 地铁



Words

zhàn

站

n. stop;
station

gōngjiāochē zhàn

公交车 站

dìtiě zhàn

地铁 站



Sentences 1



Fù jìn yǒu gōng jiāo chē zhàn ma ?

Q1:

附近有 公交车站 吗?

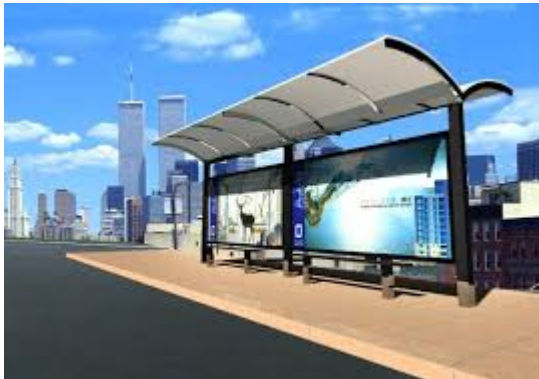
A1:

?

Match



附近 fùjìn 有 + 吗?



Sentences 2



Q1:

Fù jìn yǒu gōng jiāo chē zhàn ma ?

附近有公交车站吗？

Yǒu, jiù zài chāo shì de qián bian.

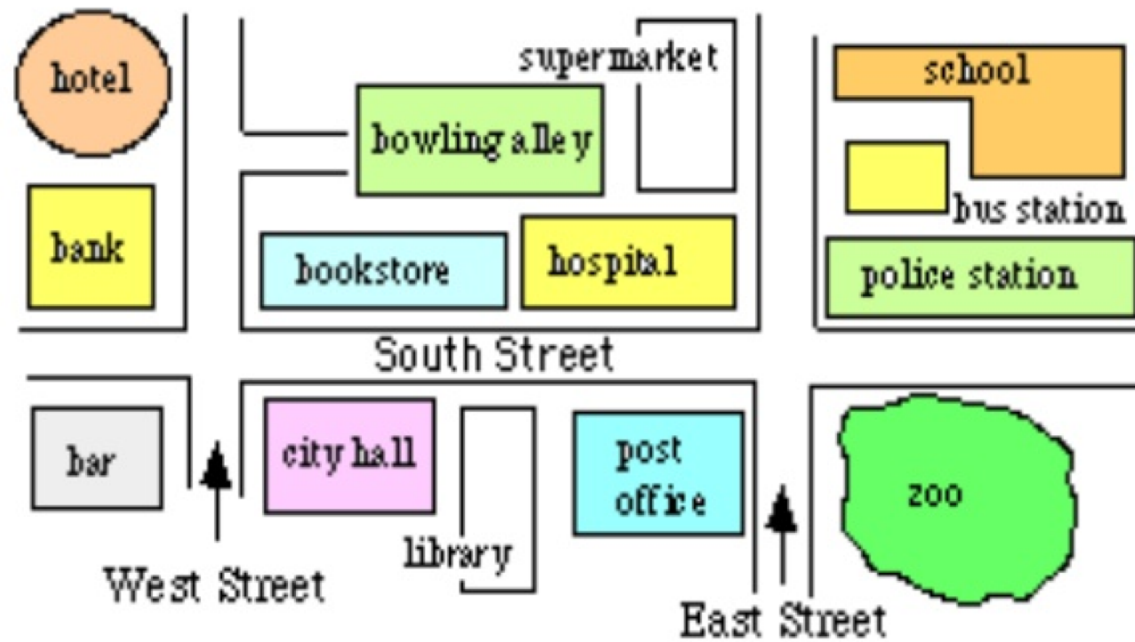
A1:

有，就在超市的前边。

Match



在 + 的 左边 / 前边 / 旁边



Sentences 3



Dào huǒ chē zhàn zuò jǐ lù chē ?

Q2:

到火车站坐几路车?

A2:

311路。

Sentences 4



Dào huǒ chē zhàn zuò jǐ hào xiàn ?

Q3:

到火车站坐几号线?

A3:

3号线。

Match



- 几路车?
- 3 路车。



- 几号线?
- 3 号线。

Conversation

A: 你好，请问附近有公交车站吗？

B: 有，就在超市的前边。

A: 那到火车站坐几路车呢？

B: 311路。

A: 好的，谢谢你。



Activities



What are these in Chinese?



Activities

Complete the following sentences.

A: 你要去哪儿?

B: 我去_____。

A: 你怎么去_____?

B: _____去。我家附近有_____。

A: 要坐几号线?

B: _____。



Tour Guide



黑车

hēi chē black taxis

In China, there are a few so-called “black taxis” which are illegal. Usually they don't have meters or receipts, so do not take the “black taxis”.

Tour Guide

Train Types: (Train Number prefix)



G (高铁)	Fastest train and the most expensive	300-320 km/h
D (动车)	Pre-highspeed trains and more expensive	160-200 km/h
T (特快)	Express train	120-140 km/h
Z (直达)	Express direct train	120-160 km/h
K (快速)	Fast train	120-140 km/h

Thank you

